

C30-6-023

Tweeter

DOMEMATERIAL: CERAMIC
APPLICATION: TWEETER
NOMINAL DIAMETER: 30 mm
SENSITIVITY: 89.5 dB

MAIN FEATURES :

SPECIAL DOME CUTOUTS

OVERHUNG MOTOR DESIGN

SOFT FABRIC SURROUND

VENTED VC & POLE PIECE

FERROFLUID FILLING

1800 HZ - 28 KHZ



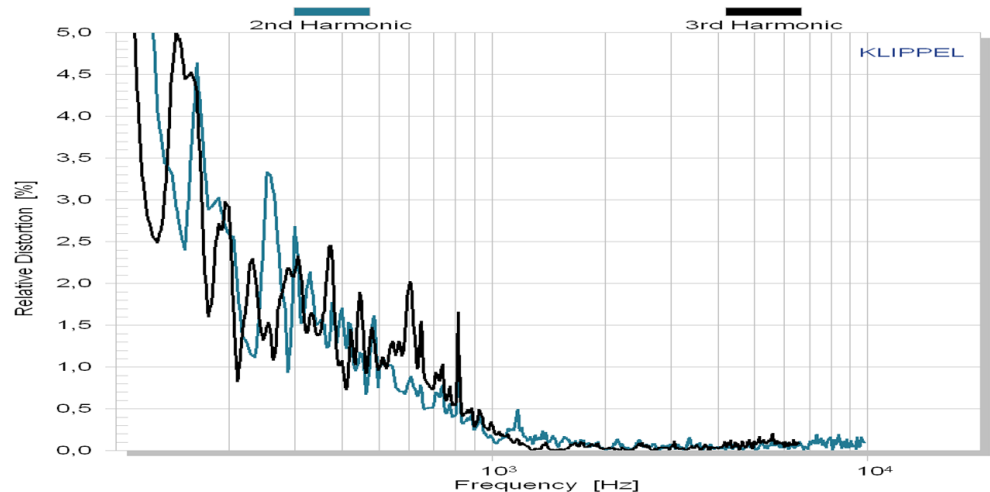
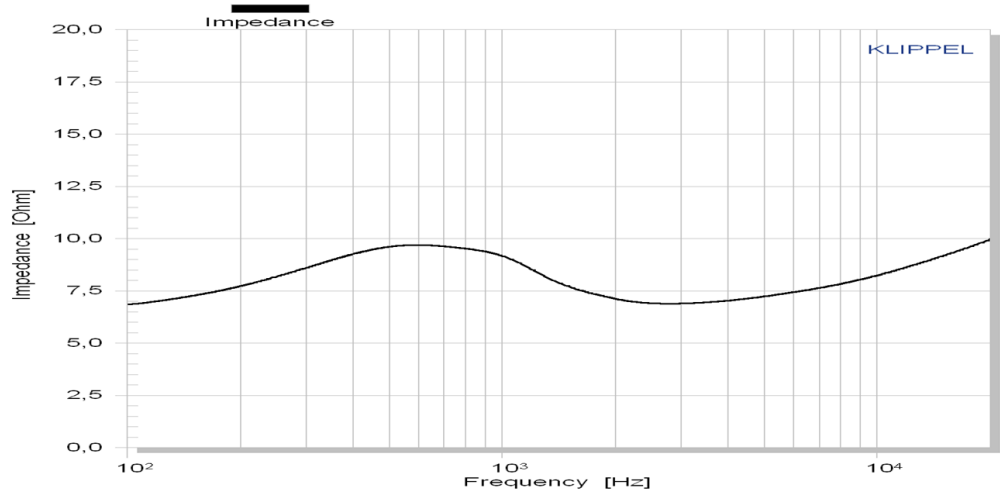
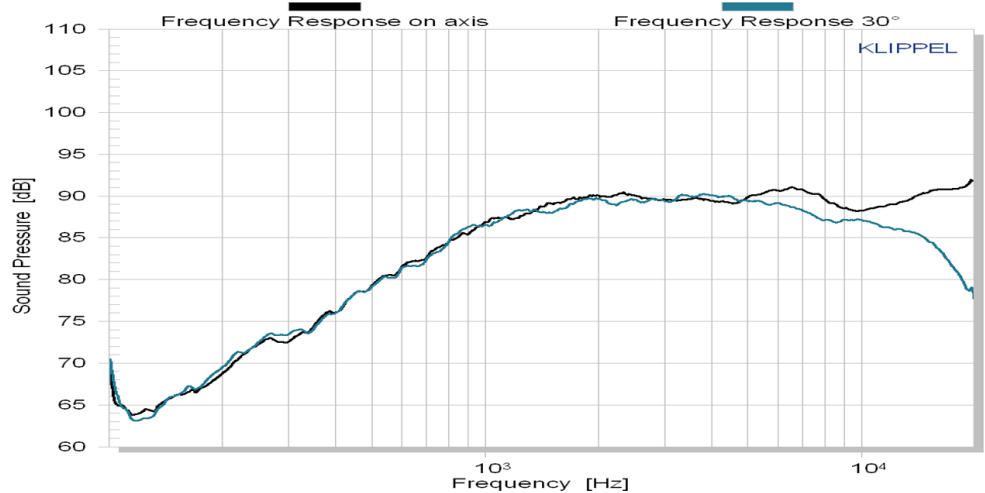
The **C30 - 6 - 023** is a 1.2 inch tweeter with ultra hard **ceramic dome** in a 106 mm frontplate.

Anti-resonant **cutout fills** in the ceramic dome provide for damping of the dome resonance.

An overhung motor design with vented aluminium voice coil former guarantees low energy storage and excellent heat transfer.

The **soft fabric surround** and ferrofluid with high viscosity center the moving parts with distinctive linearity.

We recommend an application above 1800 Hz.



All rights reserved - All data with reservation and subject to change.

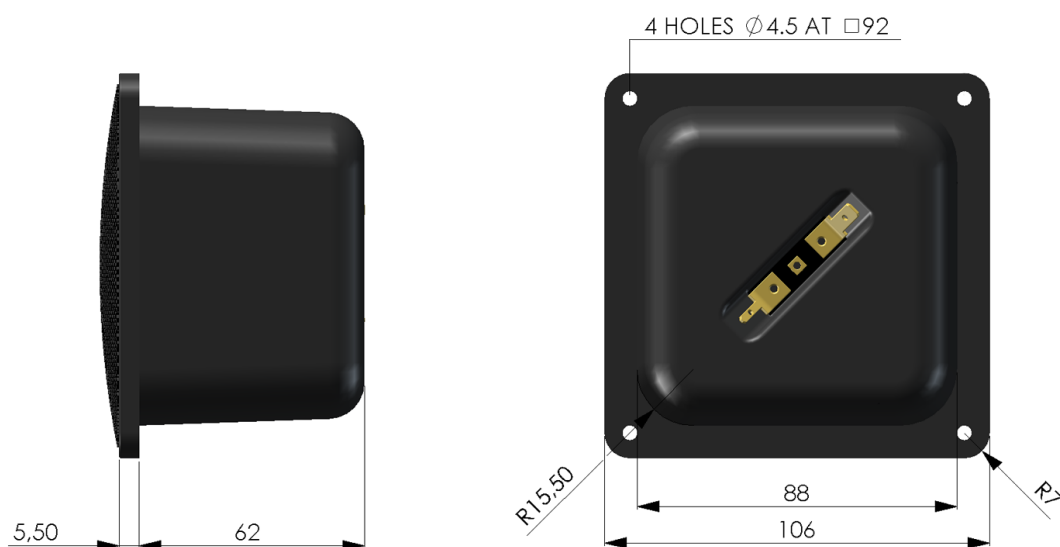
Thiel & Partner GmbH

Kantstrasse 1

50259 Pulheim

T +49 (0) 2238 / 475475

a.bankewitz@accuton.com



Mechanical data			
Overall square	106		mm
Cutout hole square	88		mm
Frontplate depth	5.5		mm
Overall depth	67.5		mm
Motor assembly diameter	-		
Motor assembly depth	-		
Screw fitting	DIN 7984, 4mm		
Terminal	+ : 4.8 x 0.8 / - : 2.8 x 0.8		mm
Shipping weight / net weight (one piece)	1.14 / 1.04		kg
Shipping box size (pair)	130 / 130 / 190		mm

Thiele/Small Parameters			
Sensitivity (2.83V / 1m)	Lp	89.5*	dB
DC-resistance	Re	6.3	Ohm
resonance frequency	Fs	570	Hz
equivalent volume of air	Vas	-	L
mechanical Q	Qms	0.65	
electrical Q	Qes	1.07	
total Q	Qts	0.40	
effective piston area	Sd	8.55	cm ²
moving mass	Mms	0.39	g
suspension compl.	Cms	0.198	mm/N
mechanical resistance	Rms	2.16	kg x s

Voice Coil data			
Power handling	P	120*	Watt
Linear excursion	Xmax	+/- 1.1	mm
Voice coil diameter		19.4	mm
Voice coil former material		Al	
Voice coil wire material		Cu	
Voice coil inductance	Le	0.04	mH
Force factor	Bl	2.89	N/A
Motor type		Overhung	
Ferrofluid filling		yes	

* Please refer to www.accuton.com for exact measurement conditions and further information.